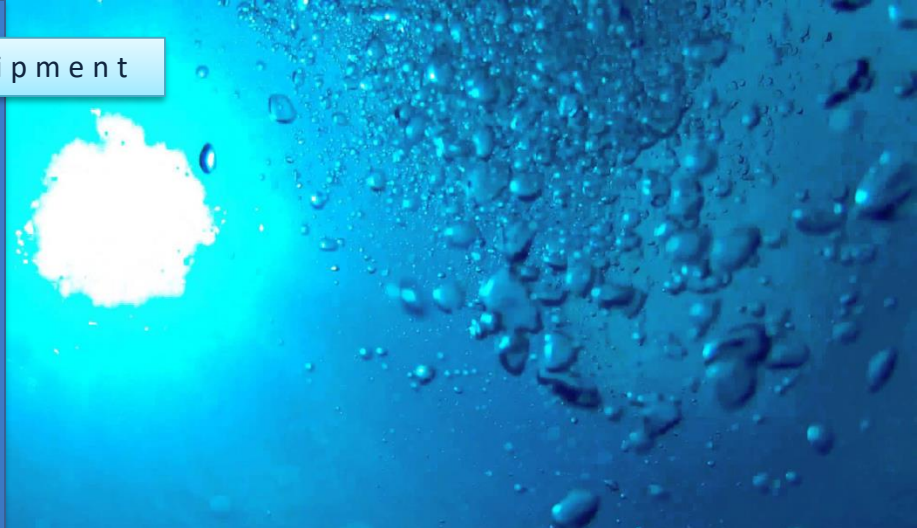


SG Isotech **EIM - PADS[®]**
(Ethanol Isotope
Measurement –
Preparation Automated
Distillation System)



EIM - PADS[®]
(Ethanol Isotope Measurement – Preparation
Automated Distillation System)
Product Specification



This system which is built with Vigreux distillation columns is controlled by the **EIM9000** software and automatically distills wine, alcohol, fermented fruit juices, or fermented honey, and thus saves time and improves the accuracy of analysis and limits operator errors. This leaves the operator free during the entire procedure, compared to the manual system which requires special attention all the time.



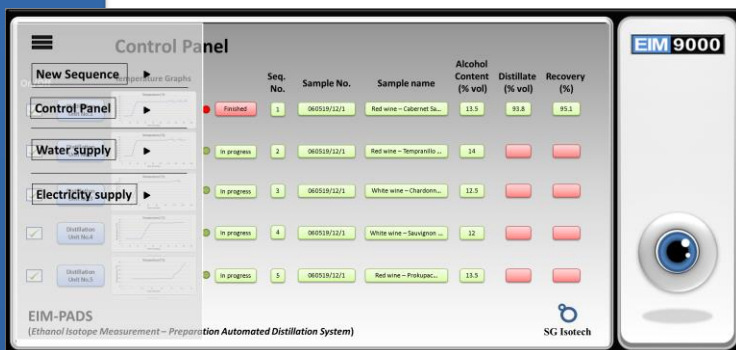
EIM - PADS®

- **EIM - PADS®** has been developed specifically for laboratories that perform isotope analyzes, e.g. **EIM-IRMS®** (Ethanol Isotope Measurement - Isotope Ratio Mass Spectrometry) for the analysis of wine, fermented honey, fermented fruit juices and spirits.
- The **EIM9000** software includes automated calculation of distillation yield.
- A computer valve regulates the flow of distillate according to the temperature level.
- Temperature level is recorded via a temperature sensor connected to a computer.
- Further more computer regulates heater on-off switching in accordance with temperature level.
- **EIM - PADS®** gives better and repeatable results than manual distillation.
- The average distillation yield is higher dm 96 % for alcohol class over 91 %vol.
- Different versions are available, with the ability to control between 3 and 8 columns.



EIM-PADS with 3, 4, 6 or 8 Column System includes:

- **EIM9000** Software
- Heating mantles for round flasks of 500 mL (250 W each)
- Robust design Stainless Steel distillation unit frames
- Vertical lift automatic actuators with upper and lower sensors and platform for heating mantles
- Fully equipped Vigreux distillation columns with temp probes and open/close electro-valves
- Installation, parameter adjustment and configuration
- On-site software training



EIM9000 software screenshot

EIM - PADS[®] details

Republic of
Serbia:

SG Isotech DOO
Pančevo
Vladimira Žestića
43,
26000 Pančevo,
+381637539144

office@sgisotech.com
support@sgisotech.com

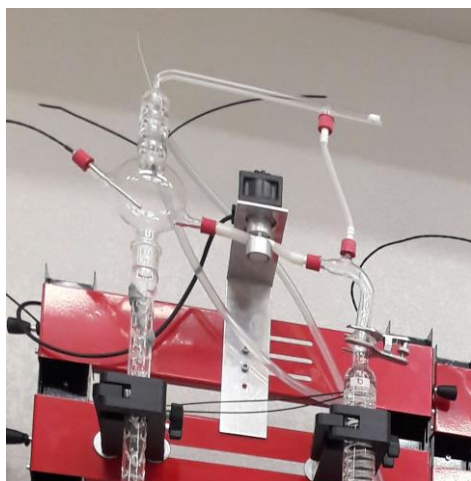
SG Isotech
©2018 SG Isotech.
All rights reserved.

www.sgisotech.com

All other trademarks
are the property of
SG Isotech and its
subsidiaries.
Specifications, terms
and pricing are
subject to change.
Please consult your
local sales
representative for
details.



SG Isotech



Details of electro-valve & temp probe
of an **EIM - PADS[®]**



Details of automated vertical lift and
heating mantle of an **EIM - PADS[®]**

Preconditions needed prior to installation for
EIM - PADS[®] with distillation units:

- ✓ Tap water supply for cooling
- ✓ Power supply 220 - 240 V, 50/60 Hz,
- ✓ UPS 2000 VA, 230 Vac, 50/60 Hz

Dimensions and Weight of one distillation unit:

500 x 400 x 1500 mm (w x d x h)

30 kg (net value)

EIM - PADS[®] Dimensions (in mm)

